

### COMMUNITY NOTIFICATION

Friday 25 January, 2019

Parramatta Light Rail is one of the NSW Government's major public transport projects, part of a record \$89.7 billion infrastructure investment across the state. Stage 1 of Parramatta Light Rail will connect Westmead to Carlingford via the Parramatta CBD and Camellia.

Before Parramatta Light Rail Stage 1 construction begins, we will be carrying out work on parts of Parramatta's road and footpath network. These works include utility relocation, intersection upgrades, new traffic lights, landscaping, and changes to street lanes and parking. This will ensure that road traffic can move smoothly through and around the Parramatta area.

Diona Ward has been engaged by Transport for NSW to complete this work.

### Upcoming Work: Intersection of Victoria Road and O'Connell Street

The intersection of Victoria Road and O'Connell Street will be upgraded to include additional turn lanes and new traffic lights. This will require relocating utilities.

#### Hours of Work

We will be working continuously **from 8pm on Friday 1 February to 5am Monday 4 February.**

From **Monday 4 February** onwards, we will be working from **8pm to 5am Monday, Tuesday, Wednesday and Friday, and from 10pm to 5am on Thursdays.**

We will notify residents in advance if we are required to work outside of these hours. We will not be working during public holidays. This work will require saw cutting the roadway, tree removal, trenching to install new services, backfilling areas and laying new asphalt.

This work may require a temporary disruption to some services. The relevant utility providers will notify you in advance should this occur.



Figure 1 Proposed intersection layout



#### Translating and Interpreting Services

If you require the services of an interpreter, please contact the Translating and Interpreting Service (TIS National) on 131 450 and ask them to telephone Parramatta Light Rail on 1800 139 389.

#### Arabic

إذا كنت بحاجة إلى مترجم، فيرجى الاتصال بخدمة الترجمة والترجمة الفورية (TIS National) على الرقم 131 450 واطلب منهم الاتصال بالسكك الحديدية الخفيفة ببarramatta (Parramatta Light Rail) على الرقم 1800 139 389

#### Traditional Chinese

如果您需要一位口譯員，請撥打131 450 到筆譯與口譯服務Translating and Interpreting Service (TIS National)，要求他們撥打Parramatta輕軌 (Parramatta Light Rail) 的電話1800 139 389

#### Simplified Chinese

如果您需要一位口译员，请拨打131 450 到笔译与口译服务Translating and Interpreting Service (TIS National)，要求他们拨打Parramatta轻轨 (Parramatta Light Rail) 的电话1800 139 389

#### Hindi

यदि आपको दुभाषि की आवश्यकता है तो कृपया अनुवाद व दुभाषिया सेवा (TIS National) को 131 450 पर फोन करें और उनसे कहें कि वह पैरामाटा लाइट रेल (Parramatta Light Rail) से टेलिफोन नम्बर 1800 139 389 पर फोन मिला दें

#### Korean

"통역사가 필요할 경우, 전화번호 131 450의 번역 및 통역 서비스 (TIS 내셔널)에 전화한 다음 1800 139 389로 파라마타 라이트 레일 (Parramatta Light Rail)에 전화해 달라고 요청하십시오."

### What you may notice

Equipment to be used includes working trucks, road saw, excavator, compacting equipment, lighting towers, as well as various power and hand tools. Some of this work will be noisy at times but we will take every possible step to minimise impacts, such as switching off equipment when it is not in use.

### Traffic and Pedestrian Changes

Victoria Road will be closed between Villiers Street and O’Connell Street from 8pm Friday 1 February to 5am Monday 4 February 2019. During this time one southbound lane will be available on O’Connell Street through the intersection of Victoria Road.

Traffic control will be in place to enable pedestrians, cyclists and motorists to move safely around work areas and ensure access to driveways is maintained. Please follow directions and proceed carefully.

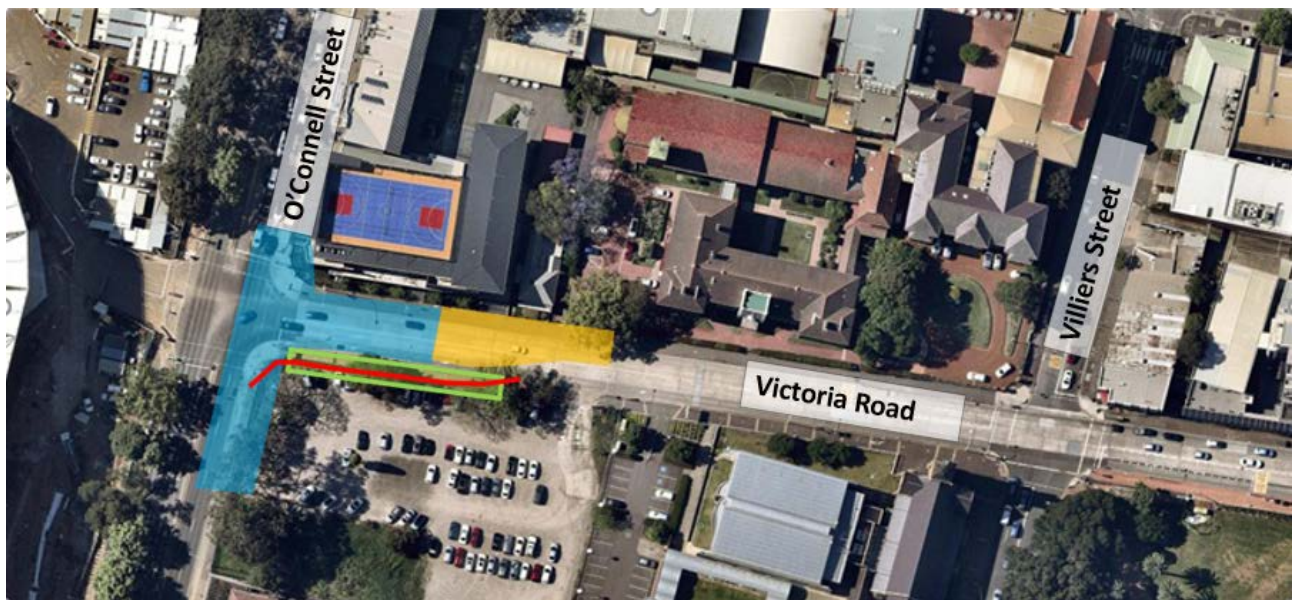
### Public Transport Changes

From 8pm Friday 1 February to 5am Monday 4 February routes 549 towards Epping and 829 Parramatta – North Parramatta Loop Service will be diverted and will miss a number of stops. Pink signs will be installed at the affected bus stops to advise customers of the alternative stop. Please note that the route 900 – Parramatta Free Shuttle is not affected by these works.

### Contact us

For more information, or if you would like to meet with our team, please call 1800 139 389 or visit the Parramatta Light Rail website [www.parramattalightrail.nsw.gov.au](http://www.parramattalightrail.nsw.gov.au). Thank you for your understanding during this important work. We will keep you updated throughout the duration of the work.

### Location of Work



Source: NearMaps, November 2018

	Location of utility works, laying of new asphalt and line marking.		Kerb and gutter pushed back to this point, making way for an additional left turning lane.
	Laying of new asphalt and line marking.		Tree removal, right lane turn, asphaltting